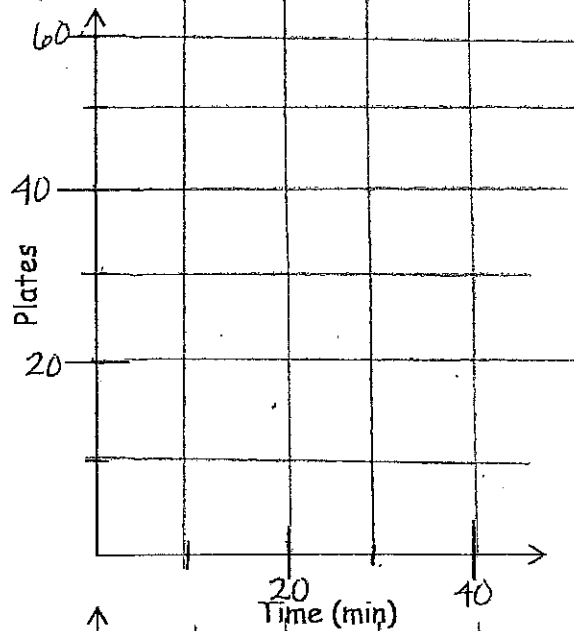


## 1.2.1 Proportional Relationships with Graphs and Tables

1-41

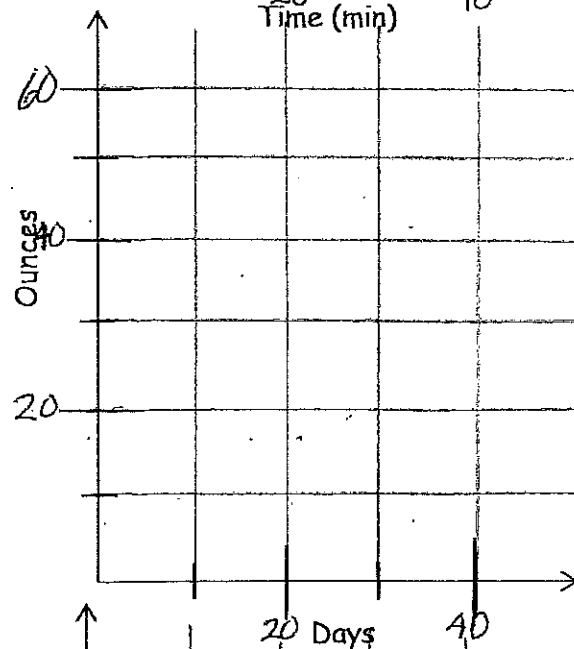
a.

Parvin	
Time (min)	Plates
0	0
10	17
20	
30	
40	



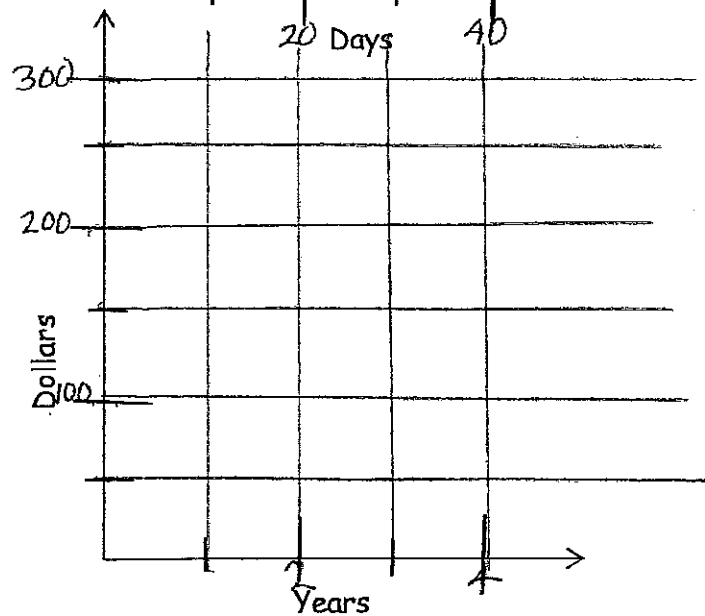
b.

Yasmin	
Time (days)	Weight (oz)
0	14



c.

Angel	
Time (Years)	Money (\$)
0	20



d.

- a. Is this situation most likely a proportional relationship? How do you know?

---

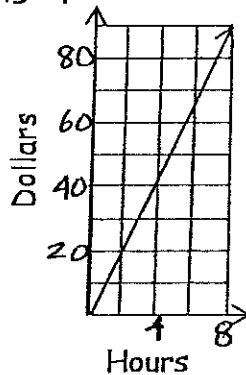


---

b.

Doug	
Time (hr)	Earnings (\$)
0	0
6	55

- c. Johnny brags that he is getting paid more than Doug to mow lawns. Johnny gets paid according to the graph below.



Who is getting paid more? How do you know?

---



---



---

- d. At what unit rate do Johnny and Doug each get paid? How do you know?

---



---



---

- e. If it is not already there, how could you show the unit rate in Doug's table? How could you show the unit rate on Johnny's graph?

---



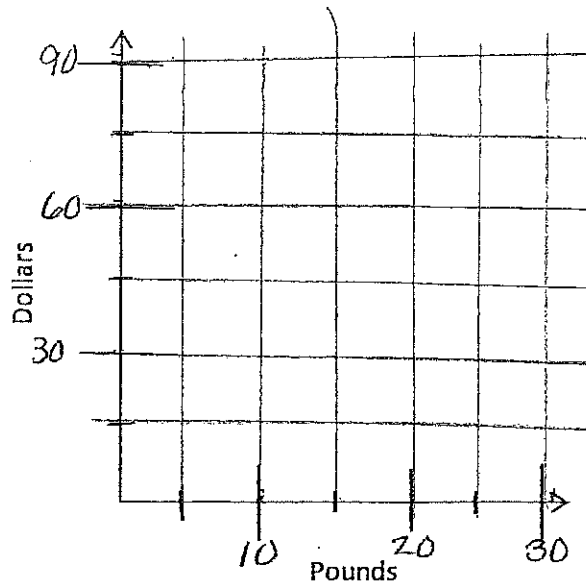
---



---

1-43

a.



b. Calculate the value of  $y$  at the point  $(1, y)$  on Ferroza's graph. Why would Ferroza want to know what the value of  $y$  is?

1-44

a. How much toothpaste does Toby use in 5 years? Show how you found this.

b. Toby's sister kept track of her toothpaste use in the following table.

Who uses toothpaste faster, Toby or his sister?

Toby's Sister	
Time (month)	Tubes (#)
14	9
28	18

c. If you have not already done so, find the unit rate (in tubes/month) for both Toby and his sister. Do the unit rates confirm your answer to part (b)?

1-45

Ferret Food	
Weight (pounds)	Cost (\$)
0	\$0.00
5	\$17.50
30	\$89.00

